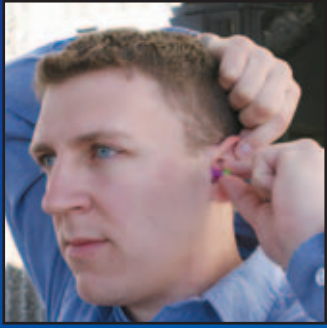


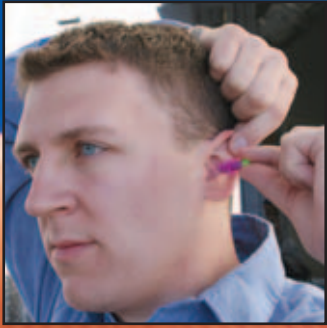
HEAR TODAY. HEAR TOMORROW.



Reach over the head and pull top of ear upward.



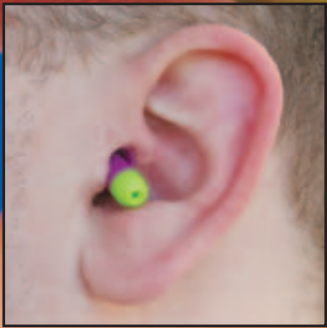
With opposite hand reach over top of head and lift up top of ear.



With other hand grasp plug handle and gently push and rock into ear canal until a good seal is made.



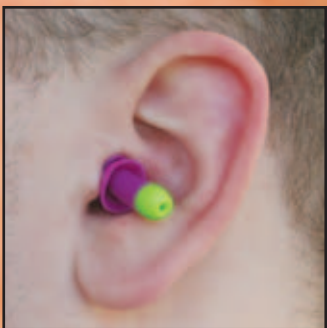
Insert forefinger into finger pocket and grasp underneath with thumb. Vigorously wiggle while pushing into the ear canal until comfortably inserted and a good seal has been achieved.



Incorrect fit.



Incorrect fit.



Correct fit.



Correct fit.

INSTRUCTIONS FOR USE

Rockets® and Comets™ Reusable Earplugs must be fitted and worn correctly to provide effective protection. Wash or clean hands before use. Plugs should be routinely washed with mild soap and warm water. **CAUTION: Remove with a slow twisting motion to break the seal. Due to the tight seal, rapid removal may damage eardrum.**

! WARNING

Use these laboratory derived attenuation data for comparison purposes only. The amount of protection afforded in field use often is significantly lower depending upon how the protectors are fitted and worn. Failure to follow all instructions could result in hearing loss or injury. Failure to obtain a proper fit will reduce effectiveness of hearing protectors and could result in hearing loss or injury. Over protection can be dangerous. The wearer must be able to hear warning signals. Wearers with hearing loss should exercise extreme caution. It is the employer's responsibility to ensure that the type of hearing protector and its NRR is appropriate for the user in their particular workplace. Use caution when working around machinery or any other equipment to ensure neck cord does not become caught or entangled. Failure to follow these warnings could result in serious injury or death. Earplugs must only be used as part of a hearing conservation program that complies with applicable local safety and health regulations. For additional information, consult your Supervisor, read all information on box and phone 800/421-0668 ext. 512/550.

MOLDEX[®]
Ideas that wear well.™

MOLDEX-METRIC, INC.
10111 W. JEFFERSON BLVD.
CULVER CITY, CALIFORNIA 90232
www.moldex.com
E-mail: sales@moldex.com
U.S. Patent #5,957,136.
9702-785 REV A 3/06