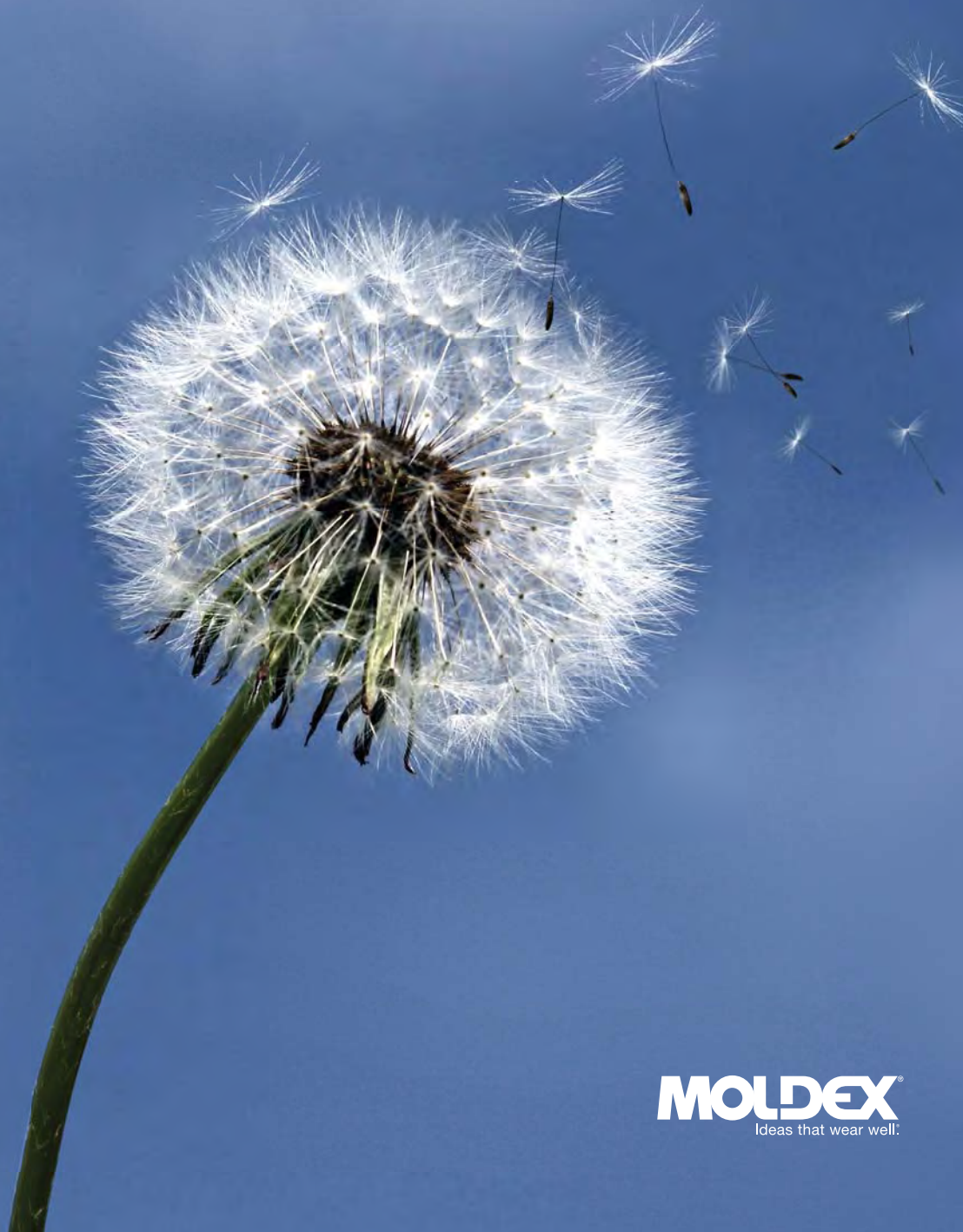




airwave[®]

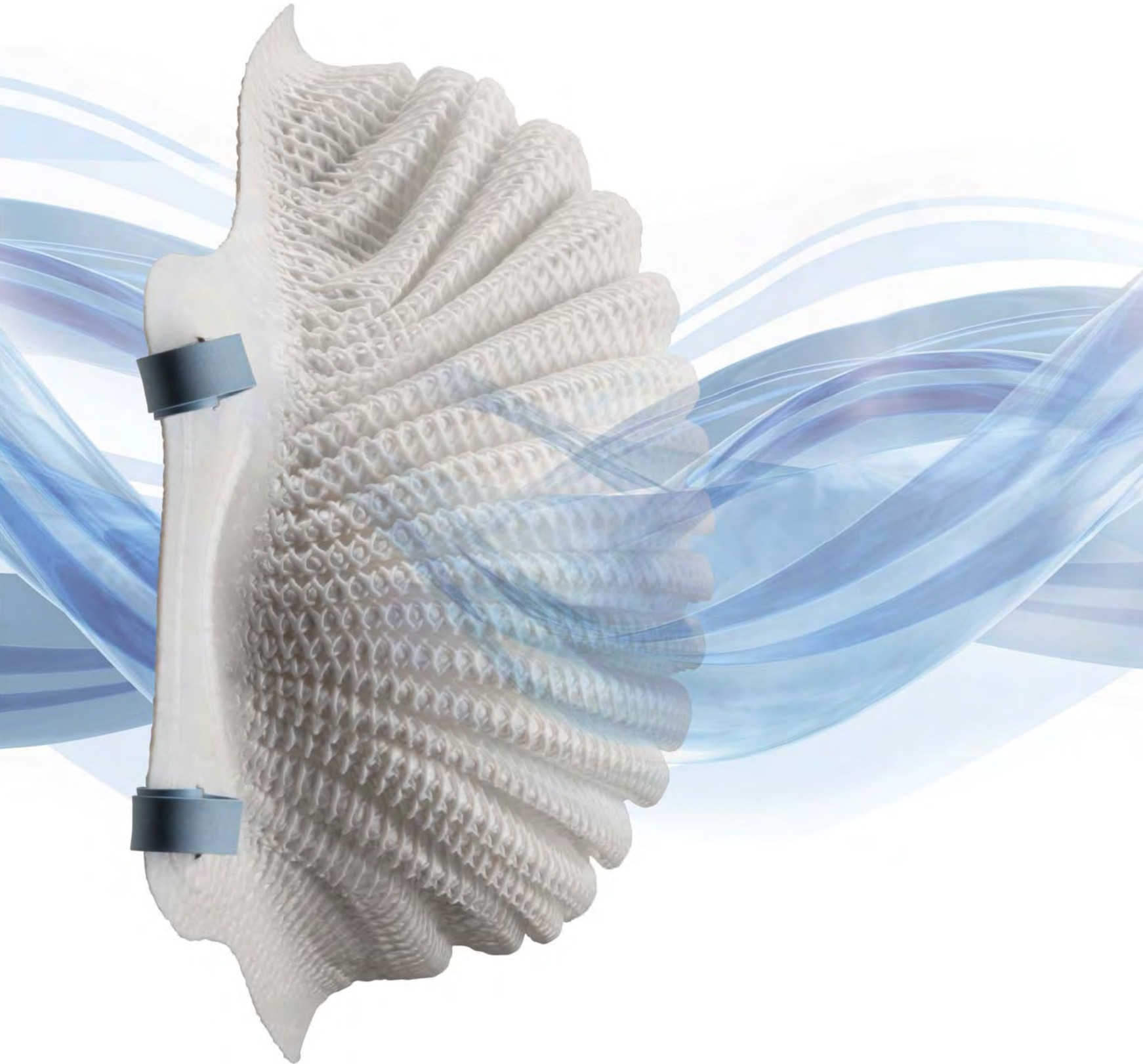
Breathing is now a breeze[™]



MOLDEX[®]
Ideas that wear well.



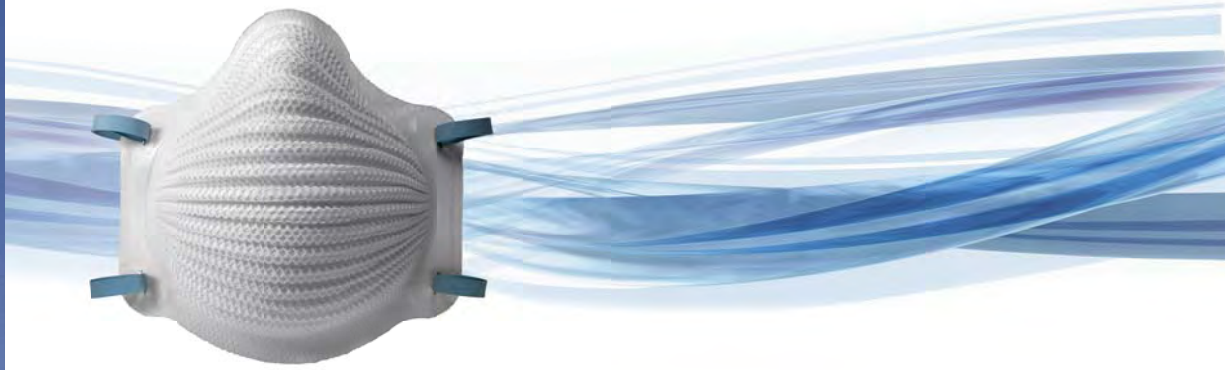
More Air. More Wear.®



- Exclusive easy-breathing wave design
- Less resistance, better breathability*
- Cool inside – without a valve
- FlexFit™ comfort waves flex with you
- Ideal where unvalved respirators are preferred
- Less cost than valved respirators
- Dura-Mesh® shell adds lasting durability
- Longer wear means less cost



AirWave is the next wave in respiratory protection—a revolutionary step forward from today's disposable respirators. Its patent-pending wave technology allows easier breathing for cool comfort, providing the protection you need all day long. Plus, it also delivers on the Moldex commitment—comfortable, durable respirators that increase compliance and decrease costs.



Breathes easier by design

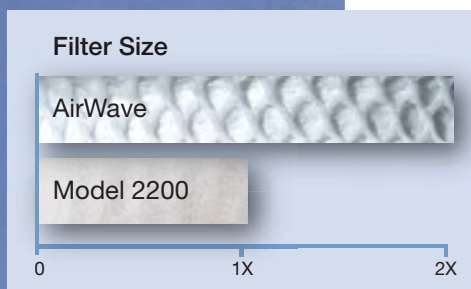
AirWave®—the valve-free respirator that breathes easier:

- Less resistance than other leading disposable respirators*
- Even less exhale resistance than the leading valved respirators*

More surface, more airflow

The outstanding performance of AirWave is due to its patent-pending, wave design technology. It allows more airflow in and out of the respirator for cool comfort and easier breathing.

- Unique waves double the filter surface area of our comparable respirator
- Dura-Mesh® shell provides bi-directional protection from dirt on the outside and moisture on the inside



Comfort inside and out



By providing more surface area, AirWave ensures cool comfort inside the respirator, without a valve. Plus our exclusive FlexFit™ design provides added comfort and compliance over time.

- FlexFit design expands and contracts as you move and speak, for optimal comfort
- Pinch-free molded nose bridge eliminates metal nose-band readjustment and discomfort





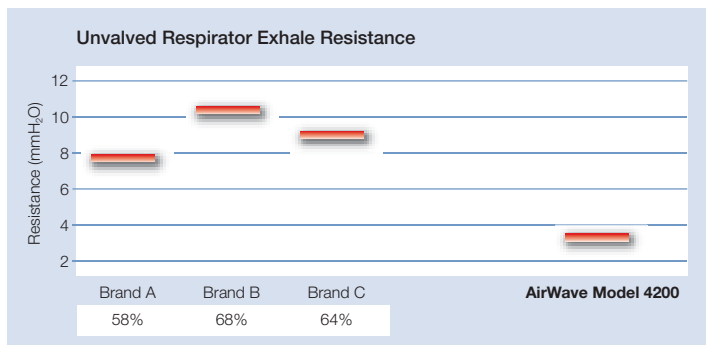
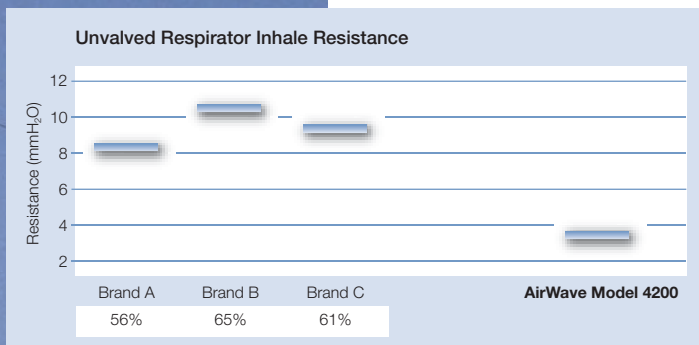
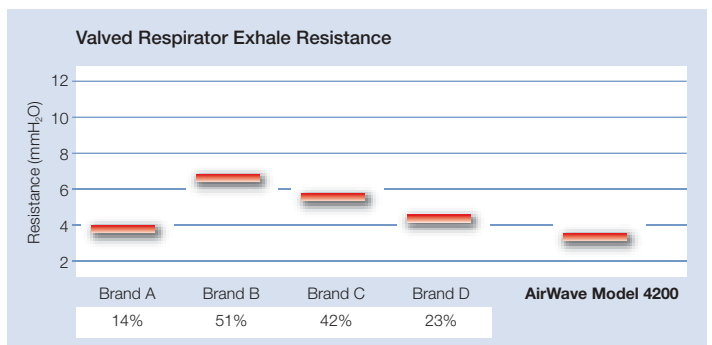
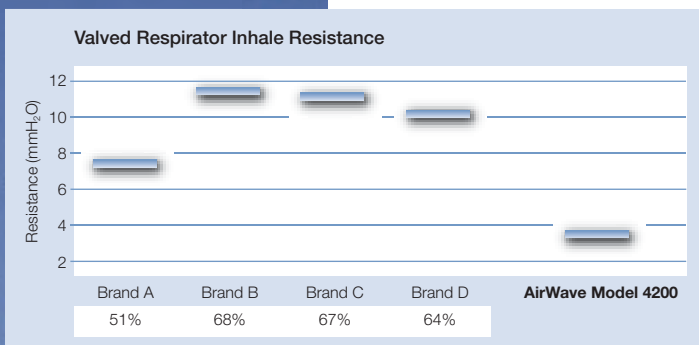
Less resistance.* Better breathability.

A key measure of breathability is resistance. For both inhaling and exhaling, AirWave provides less resistance than other valved and unvalved respirators. Benefits of lower resistance include:

- Easier breathing that encourages longer wear
- Optimal comfort that minimizes heat and moisture build-up

The AirWave difference: from 51% to 68% less inhale resistance and 14% to 68% less exhale resistance.*

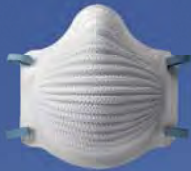
Compare the air™



*Testing conducted at 85 liters per minute in accordance with NIOSH 42 CFR Part 84.180 initial resistance requirements. Resistance will vary with actual use conditions. Charts and percentages reflect averages of test results for 30 samples of each product.

A price that won't leave you breathless

- Costs less than a valved respirator
- Longer wear means less cost than other unvalved respirators



For more information about AirWave, contact your Moldex representative, visit Moldex.com or call (800) 421-0668, ext. 550.



U.S.A. (Corporate Office)

Moldex-Metric, Inc.
10111 West Jefferson Blvd.
Culver City, CA 90232
TEL: +1 (800) 421-0668
or +1 (310) 837-6500
FAX: +1 (310) 837-9563
E-mail: sales@moldex.com

Moldex offices serviced in the U.S.A.

AUSTRALIA

Unit 30/14-16 Stanton Road,
Seven Hills, NSW 2147
TEL: +61 (02) 9838 7588
FAX: +61 (02) 9838 7544
E-mail: moldexaustralia@moldex.com

BRAZIL

Rua Tucuma 353 sobreloja Jardim Europa
Sao Paulo, SP 01455-010 Brasil
TEL/FAX: +55 (11) 2659 2108
E-mail: moldexbrazil@moldex.com

CANADA

10111 West Jefferson Boulevard
Culver City, CA 90232
TEL: +1 (310) 837-6500 Ext. 517
FAX: +1 (310) 837-9563
E-mail: sales@moldex.com

MEXICO / LATIN AMERICA

Calz. Los Arcos 168 – 3
Col. Loma Dorada
Querétaro, Qro.
76060, México
TEL: +52 (442) 234-1230
FAX: +52 (442) 234-1231
E-mail: moldexmexico@moldex.com

CHILE

La Reconquista 3408, Villa Codelco
Antofagasta, Chile
TEL/FAX: +56 (55) 77 5410
E-mail: moldexchile@moldex.com

NEW ZEALAND

3 Spence Road
Henderson, Auckland, NZ
TEL: +64 (9) 837 8247
FAX: +64 (9) 837 8248
E-mail: moldexnz@moldex.com

MOLDEX JAPAN K.K.

Level 9, Edobori Center Building,
2-1-1 Edobori, Nishi-ku,
Osaka 550-0002 Japan
TEL: +81 (6) 6225-1030
FAX: +81 (6) 6225-1111
E-mail: moldexjapan@moldex.com

Made in U.S.A.

NIOSH Approved



Printed on Recycled Paper



www.moldex.com

Moldex, Ideas that wear well, Dura-Mesh, AirWave, More Air. More Wear and the PVC-Free logo are registered trademarks. Patents Pending. FlexFit and the mesh design are trademarks of Moldex-Metric, Inc. ©2012 Moldex-Metric, Inc.

4200-045 REV B 1/12

